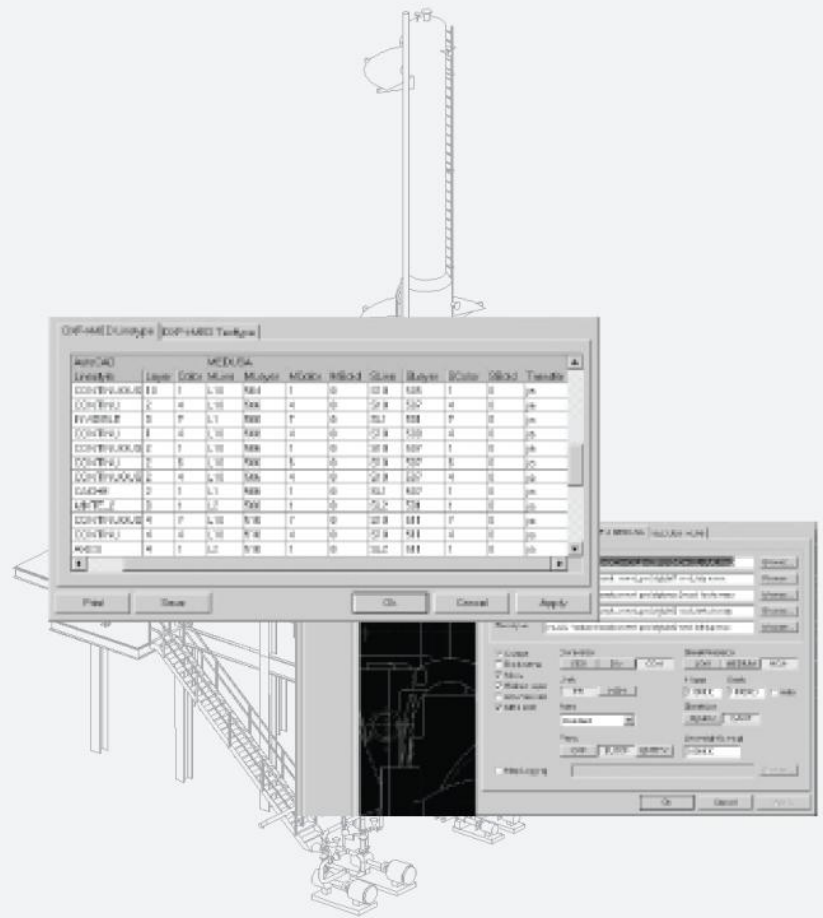
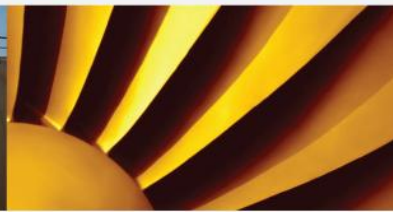


CADConvert pro

Advanced DXF/DWG Conversion



ADD-ON



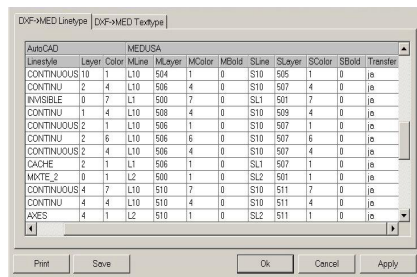
www.cad-schroer.com

CADConvert pro™

The Productivity Tool for Advanced DXF/DWG Data Conversion

In a globalised world where engineers collaborate across companies, countries and different CAD systems, a homogeneous project data environment tends to be a pipe dream. Yet fast and accurate processing of external CAD data is critical in shortening response times vis-à-vis customers and suppliers.

For companies that regularly import third party DWG or DXF files, CADConvert pro offers productivity tools which significantly enhance the standard CADConvert interface provided with CAD Schroer's MEDUSA® and MEDUSA4 drafting systems. The design speed, quality and consistency achieved with CADConvert pro helps to increase the competitiveness of your project teams.



AutoCAD Linetype	MEDUSA Layer	MLine	MLayer	MColor	MBold	SLine	SLayer	SColor	SBold	Transfer
CONTINUOUS	10	L10	504	1	0	S10	505	1	0	ja
CONTINU	12	L10	506	4	0	S10	507	4	0	ja
INVISIBLE	0	L1	500	7	0	S11	501	7	0	ja
CONTINU	1	L10	508	4	0	S10	509	4	0	ja
CONTINU	2	L10	506	1	0	S10	507	1	0	ja
CONTINU	2	L10	506	6	0	S10	507	6	0	ja
CONTINU	2	L10	506	4	0	S10	507	4	0	ja
CACHE	2	L1	506	1	0	S11	507	1	0	ja
MKTE_2	0	L2	500	1	0	S12	501	1	0	ja
CONTINU	4	L10	510	7	0	S10	511	7	0	ja
CONTINU	4	L10	510	4	0	S10	511	4	0	ja
ANES	4	L2	510	1	0	S12	511	1	0	ja

Clear and concise analysis of imported data

Product Overview

DWG, the AutoCAD® drawing format, and DXF, the AutoCAD® drawing exchange format, belong to the world's most widely supported vector formats. Because DXF is so versatile, it is used by many different systems; but manufacturers tend to have their own specific mappings, resulting in many different DXF "dialects", which have to be interpreted when reading in the data.

Data Translation through Mapping Tables

CADConvert pro works by first importing all the information available in a DXF file into a high-capacity graphical core. Its graphical Mapping Editor then allows you to map the different elements extracted from the existing format to the corresponding elements in the destination system.

You can display and compare the input and output elements, modify individual entries, and filter for specific elements. Mapping tables include layer, line style and text style tables.

Once you have determined the optimal settings for data conversion, you can save them to re-use at any time. This makes it easy to collaborate between different systems. The conversion of data files from a given customer or supplier then becomes as easy as the click of a button. Saved mapping tables can be loaded and edited at any time, and saved under the name of your choice for future batch conversions.

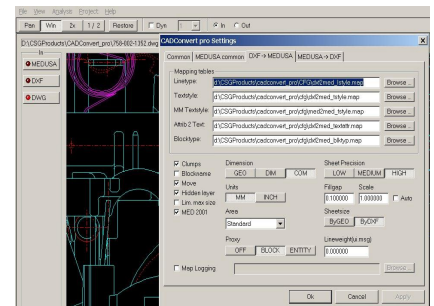
DXF Prototype File

CADConvert pro also allows you to create a DXF prototype file, used to set up your company standards for converting your own data to the DXF or DWG format.

Features and Benefits

- Easy GUI-driven parameter set-up
- Load multiple set-ups – quick access to customer-specific conversion options
- Comparative display of input and output files; zooming and dynamic panning for accuracy checking
- Specify your own DXF prototype file – quick and consistent data output
- Support for standard Japanese characters

- Element properties stored with elements or as layer property – flexible data options
- Advanced batch conversion options – speedy output into central directory
- Block and group structure display – allows intelligent mapping between AutoCAD and MEDUSA sheet structures



Easy configuration options for optimal data conversion

Platforms Supported

- Windows® XP Professional (SP 2 and 3), Vista Business (SP 1 and 2) and 7 Professional



CAD Schroer GmbH (HQ Germany)
Fritz-Peters-Str. 26-30
47447 Moers
Tel. +49 (0)2841 9184-0
www.cad-schroer.de

CAD Schroer UK Ltd
39 Newnham Road
Cambridge CB3 9EY
Tel. +44 (0)12234 460 408
www.cad-schroer.co.uk

CAD Schroer US, Inc.
34 Rand Place,
Pittsford, NY 14534
Tel. +1 866-SCHROER
www.cad-schroer.com

Technical modifications reserved. © CAD Schroer GmbH.
All rights reserved. All brands or product names are trademarks
or registered trademarks of their respective owners. 07/2010