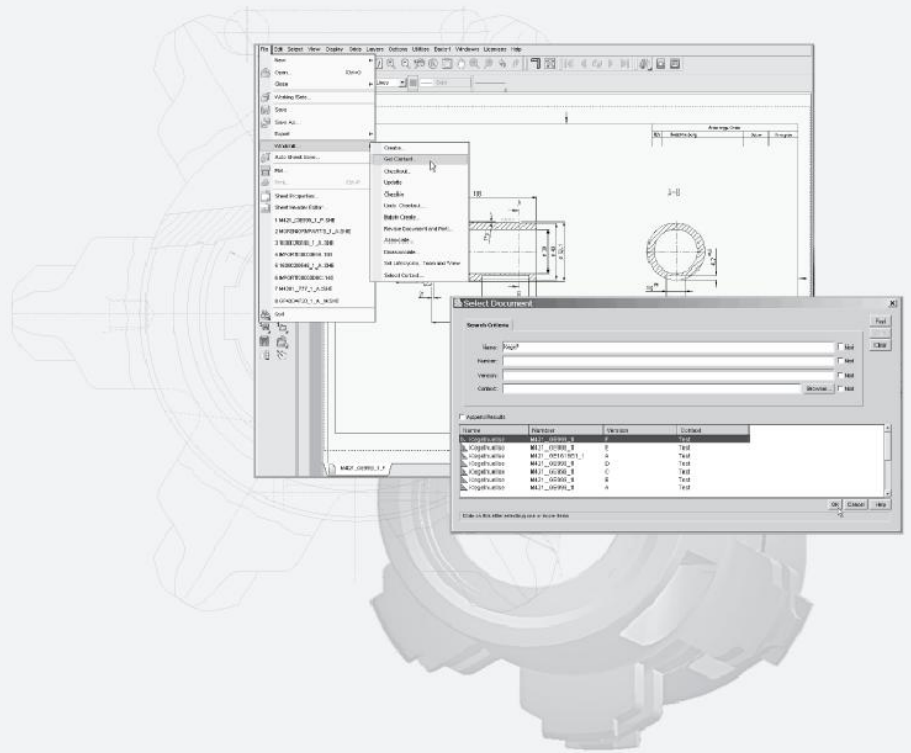


MEDUSA⁴

MEDLINK

Windchill[®] PDMLink[™] Integration



ADD-ON

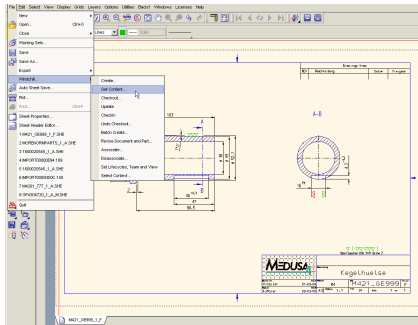


www.cad-schroer.com

MEDLink™

Connecting MEDUSA4® with Windchill® PDMLink™

The MEDLink interface was designed to provide tight integration between MEDUSA4 and Windchill® PDMLink™, helping to optimise the product development process.



Access to Windchill PDMLink functionality in MEDUSA4

Overview

MEDLink lets you search for MEDUSA4 sheets, request drawings for editing, return edited sheets via check-in or update into the central storage area, and set up batch loading for complete existing data sets.

You can integrate chosen Windchill PDMLink attributes with your MEDUSA4 sheet headers, and edit master parts information when storing sheets, with bi-directional auto update. Associations between parts and sheets can be edited and updated individually.

Because Windchill PDMLink is a Web-based system, this integration allows you to manage your designs remotely, ideal for today's global businesses.

Why Use Windchill PDMLink via the MEDLink Environment?

- Achieve a consistent standard of information for drawings and documents across the whole company, due to centralised storage of all MEDUSA4 sheets, released or in process, in Windchill PDMLink
- Track and control the drawing modification process through revision options and "freezing" of released sheets
- Control project-specific test and release processes with access to current information at any time
- Benefit from project-specific storage and retrieval of MEDUSA4 sheets

Technical Highlights

- Windchill PDMLink functions included in the MEDUSA4 menu structure
- MEDUSA4 title block attributes interact automatically with PDMLink
- Automatic generation/modification of MEDLink parts and part structures
- Links between drawings and parts information
- Extensive pre and post trigger collection for customer specific modification
- Event controlled conversion of the MEDUSA4 sheets into other formats (e.g. conversion to tiff after release of the drawing. *Note: the converters in the target format are not a component of the product*)
- Event-driven drawing modification (e.g. adding a stamp to the drawing before plotting; off-line update of the revision letter on the drawing)

Software Prerequisites

- MEDUSA4 DRAFTING PLUS or ADVANCED package
- Windchill PDMLink 9

Platforms Supported

- Windows® XP Professional (SP 2 and 3), Vista Business (SP 1 and 2) and 7 Professional
- Sun® SPARC Solaris 9 and 10 with CDE



CAD Schroer GmbH (HQ Germany)
Fritz-Peters-Str. 26-30
47447 Moers
Tel. +49 (0)2841 9184-0
www.cad-schroer.de

CAD Schroer UK Ltd
39 Newnham Road
Cambridge CB3 9EY
Tel. +44 (0)12234 460 408
www.cad-schroer.co.uk

CAD Schroer US, Inc.
34 Rand Place,
Pittsford, NY 14534
Tel. +1 866-SCHROER
www.cad-schroer.com

Technical modifications reserved. © CAD Schroer GmbH.
All rights reserved. All brands or product names are trademarks
or registered trademarks of their respective owners. 07/2010