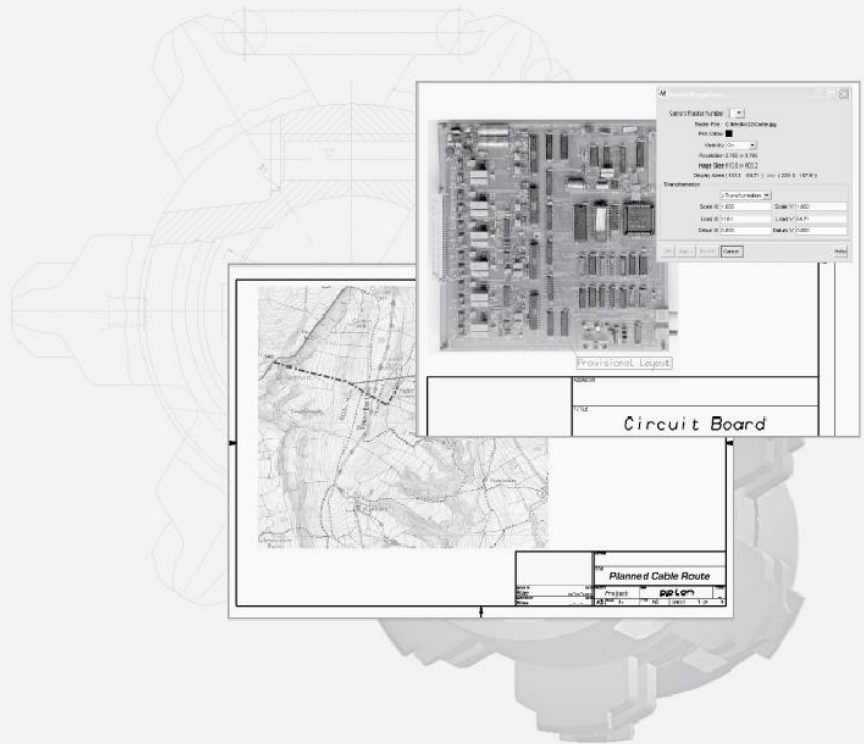


MEDUSA⁴

MEDRASTER COLOUR

Raster Image Module



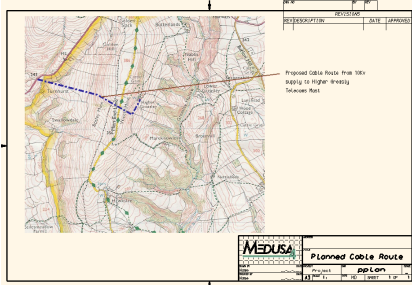
ADD-ON



MEDRaster Colour™

Unlock the Value of Existing Data

MEDRaster Colour is a MEDUSA4 module which allows you to incorporate, edit and store colour and monochrome raster data in your designs, and provides combined raster and vector data support. MEDRaster Colour unlocks the value of your existing (often legacy) drawings and non-CAD data, adding new breadth to the information conveyed by your designs, while bringing external raster images up to date and under control within your PLM environment.



Easily incorporate supplementary information, such as colour maps, in your designs.

Product Overview

Do you have a large investment in existing designs or non-CAD data, in paper or image formats? Do you get paper or electronic image data from your customers, and then spend many hours redrawing it, simply to make additions or small modifications?

Even in today's high-tech environment, analysts estimate that two out of three designs still exist in paper format. Many companies hold a wealth of paper drawings, stored in archives or drawers, or - increasingly common - scanned as raster images, largely uncontrolled and difficult to use, often leading to the decision to start completely from scratch with new electronic designs, at considerable expense.

MEDRaster Colour lets you close the gap between partial and complete automation of the design process, by allowing you to easily integrate and store non-CAD data and scanned paper-based drawings in your existing database, immediately making valuable ideas, designs and data available again.

Convey it in Colour
Advances in technology have made colour drawing production increasingly common. MEDRaster Colour is ideal for using maps, 3D coloured images or photographs as part of a drawing, easily conveying important supplementary information.

How Does It Work?

MEDRaster Colour converts scanned paper drawings or vector graphics to raster data, which can then be deployed as a raster background in the vector environment of a MEDRaster Colour sheet, ensuring consistent integration of raster and vector graphics.

Its binary compatible format means that the raster data can be distributed between workstations and PCs. This is of particular interest in environments where designs are tested or drawings are viewed, changed, or provided with additional comments on diverse platforms.

Several raster images can be loaded, edited and managed separately or merged as a single new image directly in MEDRaster Colour.

Software Requirements

- MEDUSA4 from V2.2

Platforms Supported

- Windows® XP Professional (SP 2 and 3), Vista Business (SP 1 and 2) and 7 Professional
- Sun® SPARC Solaris 9 and 10 with CDE
- Linux® Red Hat Enterprise version 5 WS



CAD Schroer GmbH (HQ Germany)
Fritz-Peters-Str. 26-30
47447 Moers
Tel. +49 (0)2841 9184-0
www.cad-schroer.de

CAD Schroer UK Ltd
39 Newnham Road
Cambridge CB3 9EY
Tel. +44 (0)12234 460 408
www.cad-schroer.co.uk

CAD Schroer US, Inc.
34 Rand Place,
Pittsford, NY 14534
Tel. +1 866-SCHROER
www.cad-schroer.com

Technical modifications reserved. © CAD Schroer GmbH 2010.
All rights reserved. All brands or product names are trademarks or registered trademarks of their respective owners. 07/2010