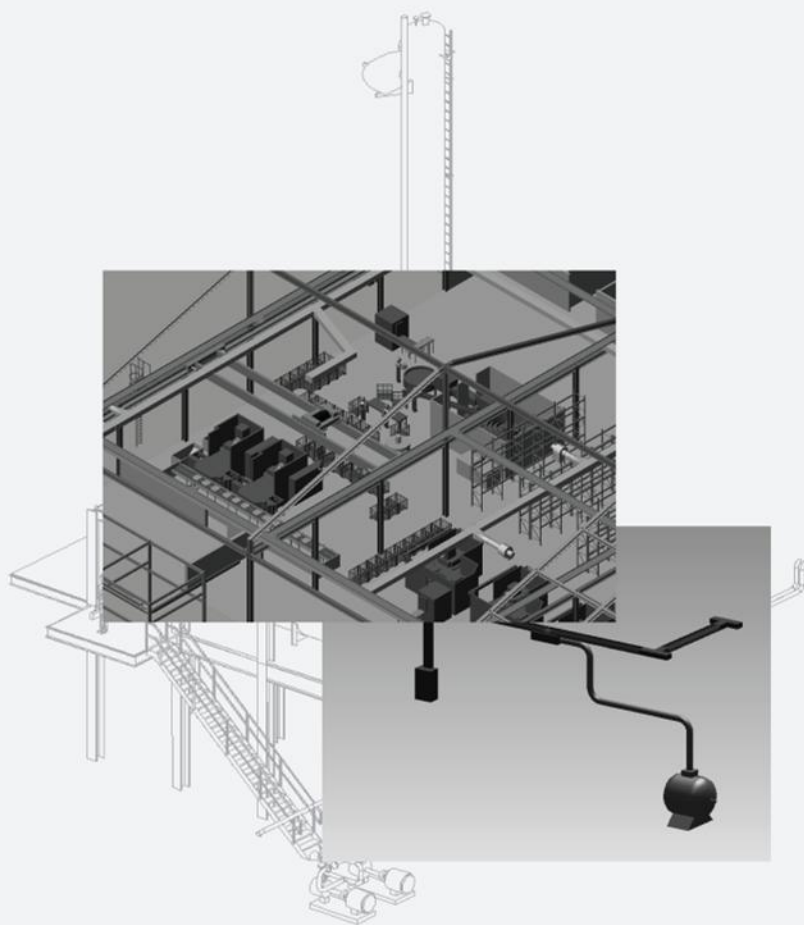


MPDS₄

ELECTRICAL DESIGN

Industrial Electrical Routing Solution



ADD-ON



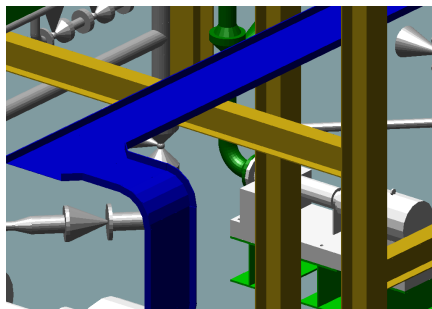
MPDS4 ELECTRICAL DESIGN™

The Professional Industrial Electrical Routing Solution

MPDS4 ELECTRICAL DESIGN is an add-on module providing a complete professional electrical routing solution with a very rich feature set. The module offers a large number of extensible libraries of catalog components to a variety of industrial standards.

Creating and Editing Cable Routes

MPDS4 ELECTRICAL DESIGN offers powerful routing tools for loading, positioning and replacing electrical routing components and control systems, either manually or automatically.

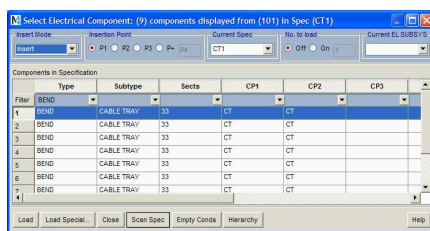


MPDS4 ELECTRICAL DESIGN makes it easy to route cable trays in 3D

Catalog-Based Design

The catalog component libraries provided with MPDS4 ELECTRICAL DESIGN help you cut down on errors, allowing you to quickly and consistently design complete cabling systems based on company-specific standards.

The catalogs contain many different types of electrical and control systems, as well as cable trays, cable ducts, cables and bus bars. They are user extensible and customisable, with a central database ensuring consistent delivery of up-to-date catalog data to your design teams.



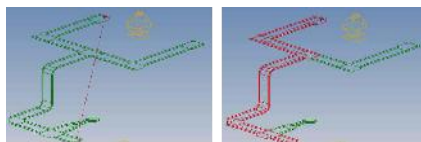
Easily select cabling components from the extensive parts libraries provided

Routing Cables

MPDS4 ELECTRICAL DESIGN allows you to manually or automatically route cables of the right specification in the cable trays created. You can also route exposed cables between cable trays and connection points on components in your plant. The required lengths of cable can then be exported to your parts list.

Auto Routing

MPDS4 ELECTRIC DESIGN allows you to automate time-consuming cable routing tasks using the auto routing tool provided. The tool automatically looks for the shortest route between the desired beginning and end point of a cable in the appropriate system.



Auto routing functionality finds the shortest cable route between two designated points

Power Rating Analysis

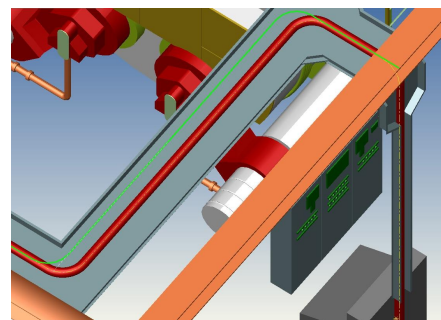
Use MPDS4 ELECTRICAL DESIGN to add a KVA (kilo volt-ampere) rating to selected components. This allows you to analyse the required power rating of an entire network of connected instances and cables.

Hard and Soft Interference Checking

Interference checking functionality provides users with a quick overview of overlapping components. Hard interference checking flags up overlaps between selected areas and components, while soft interference checking flags up insufficient space between individual components.

Automatic Parts List Creation and ERP System Integration

Automatically created parts lists can be exported (to CSV, for example) to gain a quick overview of an entire project. The software can be integrated with your ERP system, allowing additional information, such as component cost or weight, to be displayed, and linking plant design with other corporate processes, such as project costing and procurement.



MPDS4 offers drag & drop editing, allowing designers to quickly change cable routes, for example.

Software Requirements

- MEDUSA4 ADVANCED
- MPDS4 ASSEMBLY MANAGER
- MPDS4 PIPING DESIGN



CAD Schroer GmbH (HQ Germany)
Fritz-Peters-Str. 26-30
47447 Moers
Tel. +49 (0)2841 9184-0
www.cad-schroer.de

CAD Schroer UK Ltd
Godwin House, Castle Park
Cambridge CB3 0RA
Tel. +44 (0)12234 460 408
www.cad-schroer.co.uk

CAD Schroer US, Inc.
34 Rand Place,
Pittsford, NY 14534
Tel. +1 866-SCHROER
www.cad-schroer.com

Technical modifications reserved. © CAD Schroer GmbH 2011.
All rights reserved. All brands or product names are trademarks
or registered trademarks of their respective owners. 10/2011