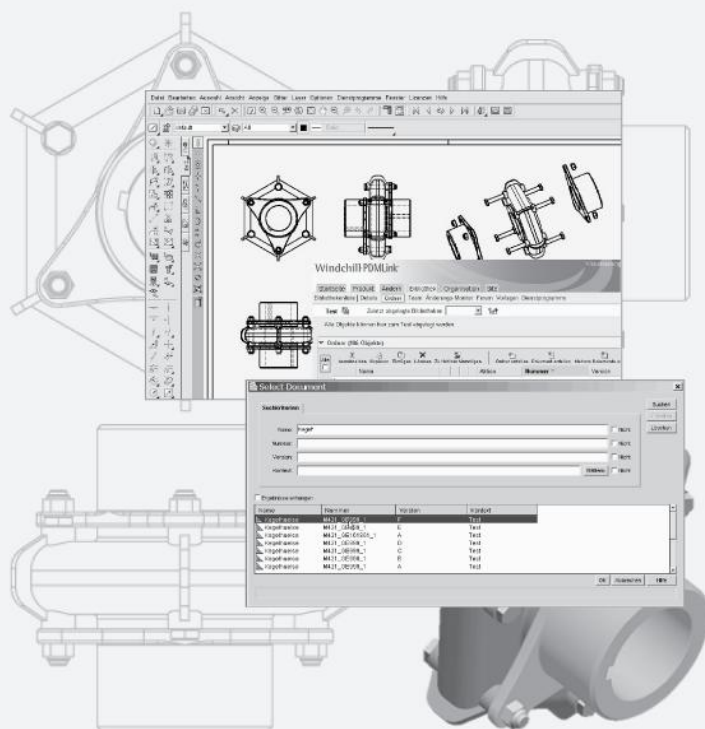


STHENO/LINK

Windchill® PDMLink™ Integration



ADD-ON

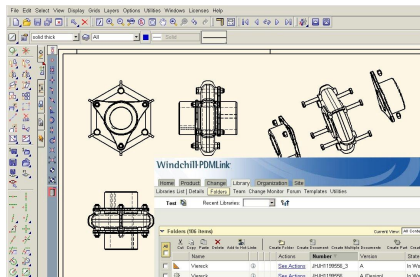


The STHENO/LINK Windchill PDMLink interface was designed to provide tight integration between STHENO/PRO and your data management environment, helping to optimise the product development process.

Overview

STHENO/LINK lets you search for STHENO/PRO sheets, request drawings for editing, return edited sheets via check-in or update into the central storage area, and set up batch loading for complete existing data sets.

You can integrate chosen PDMLink attributes with your STHENO/PRO sheet headers, and edit master parts information when storing sheets, with bi-directional auto update.



STHENO/LINK provides a direct link between your 2D designs and your PDM environment

Associations between parts and sheets can be edited and updated individually.

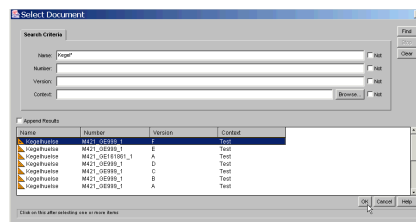
Because PDMLink is a Web-based system, this integration allows you to manage your designs remotely, ideal for today's global businesses.

Why Use PDMLink via the STHENO/LINK Environment?

- Achieve a consistent standard of information for drawings and documents across the whole company, due to centralised storage

of all STHENO/PRO sheets, released or in process, in PDMLink

- Track and control the drawing modification process through revision options and "freezing" of released sheets
- Control project-specific test and release processes via the PDMLink workflow
- Access current information at any time
- Benefit from project-specific storage and retrieval of STHENO/PRO sheets



Element selection using PDMLink

Technical Highlights

- PDMLink functions included in the STHENO/PRO menu structure
- STHENO/PRO title block attributes interact automatically with PDMLink
- Automatic generation/modification of PDMLink parts and part structures
- Links between drawings and parts information
- Extensive pre and post trigger collection for customer specific modification
- Event controlled conversion of STHENO/PRO sheets into other formats (e.g. conversion to TIFF after release of the drawing. *Note: the converters in the target format are not a component of the product*)
- Event-driven drawing modification (e.g. adding a stamp to the drawing before plotting; off-line update of the revision letter on the drawing)

Software Prerequisites

- Windchill PDMLink 9

Platforms Supported

- Windows® XP Professional (SP 2 and 3), Vista Business (SP 1 and 2) and 7 Professional
- Sun® SPARC Solaris 9 and 10 with CDE