



X-Off Plot

Version 2003-300

March 2006

Plot Solutions

CAD Schroer GmbH
Fritz-Peters-Str. 26-30 · D 47447 Moers
Tel. +49 (0)2841 / 91 84 - 0
Fax +49 (0)2841 / 91 84 - 44
e-mail: csg@cad-schroer.de

CAD Schroer AG
Bettlistraße 35 · CH 8600 Dübendorf
Tel. +41 (0)1 / 802 89 - 80
Fax +41 (0)1 / 802 89 - 88
e-mail: csg@cad-schroer.ch

COPYRIGHT INFORMATION AND TRADEMARKS

X-Off Plot V2003-300 Plot Solutions

All used trademarks and registered trademarks are trademarks of the respective owners.

All rights reserved. No part of this documentation is allowed to be reproduced in any kind (printing, photocopying or others) without written permission of CAD Schroer GmbH.

All instructions of this document have been compiled with greatest care. However CAD Schroer can not undertake neither warranty nor legal responsibility or liability of any kind for results that are based on false statements.

Registered Trademarks of CAD Schroer GmbH:

MEDUSA, STHENO

Trademarks of CAD Schroer GmbH:

STHENO/PRO, MEDEA, MPDS

Third-Party Products and Trademarks:

Pro/ENGINEER, Pro/DETAIL and Pro/TOOLKIT are registered trademarks of Parametric Technology Corporation.

All other brand or product names are trademarks or registered trademarks of their respective holders.

Copyright © CAD Schroer GmbH
Fritz-Peters-Straße 26 - 30
D - 47447 Moers

Web: <http://www.cad-schroer.com>

March 2006

TABLE OF CONTENTS

Preface	7
Introduction	7
What's new.	7
Installation	9
The User Interface	11
Overview	12
List	13
Plot Properties	13
File Browser	13
Preview Window.	13
Selecting a Plotter	14
Program Operating	15
Starting the Program	16
Selecting a File.	16
Editing the List	17
Preview	17
Plot Properties	18
Choosing a Plotter	18
Plotting	19
Configuration	21
General Notes	22
Plotter Selection	22
Plotter Command	23

Assignment of Sheet Size and Plotter	23
Plot Program	24
Plot Properties	24
Viewer script.	26
AutoPlot	26
Configuration of AutoPlot	27
Example of a Configuration File	28
Usertext	29
Localization	31
The Plot Program	33
Command Line Arguments and License	35
Error messages	37
Index	39

PREFACE

Introduction

X-Off Plot is a file browser which is used for arranging a list of MEDUSA sheets out of different directories. These sheets can be plotted either individually or as a collective list.

Furthermore the program provides the possibility of viewing the sheets in an integrated preview window, either as a thumbnail or within a larger pop-up window.

This document describes the installation and configuration procedure to be followed for the product X-Off Plot version V2003-300 and introduces the user interface and operating of the program.

What's new

MEDUSA 2003 Support

X-Off Plot V2003-300 supports MEDUSA 2003-300.

The version V2003-300 of X-Off Plot is the succeeding version of X-Off Plot V1.5.

From this version on the numbering of versions is adapted to the MEDUSA products.

Localization

X-Off Plot has been localized. The Version V2003-300 is available in German and English language.

The language is set in the *csgxoffplt.cfg* file as follows:

German: LANGUAGE = ger

English: LANGUAGE = gb

License File

The license for the X-Off Plot product will be delivered together with the MEDUSA license .

Since version V2003-300 the MEDUSA keyfile *csglmd.lic* contains the according entries for the X-Off Plot license in the feature lines.

INSTALLATION

For installing X-Off Plot do the following steps:

1. Start the installation with the file *XOffPlot_2003_300.exe* which is on the installation CD in the directory *X_Off_Plot_2003_300*.
An InstallShield Wizard starts.
2. Choose the language for installation (available languages are English and German).
3. You are asked for the directory in which you want to install X-Off Plot.
Example: *C:\Programs\X-OffPlot*
4. Next you have to define the path to your MEDUSA user project.
Example: *D:\Medusa2003_300\<userproject>*
5. Define the path to *medplot_winplot* which is inside the installation directory of MEDUSA.
6. Finally, run the installation process itself with the button **Install**.
X-Off Plot is installed immediately.
For running X-Off Plot choose *<X-Off Plot install path>\bin\XOffplot.exe*.

For running X-Off Plot ensure that the correct license path is used. You have to set the license path in the USER_PROJECT. For details see "[Command Line Arguments and License](#)", "[License](#)" on page 35.

The language used in the user interface of X-Off Plot is defined inside the file *csgxoffplt.cfg*. For details see "[Configuration](#)", "[Localization](#)" on page 31.

Please Note: If others than the intended plotter drivers should be used with the installation, please contact our office - Tel. 0 28 41/91 84 15 - we then will be glad to help you.

THE USER INTERFACE

This chapter gives you some information about the configuration of the user interface and you get to know the basics of the areas, of which X-Off Plot consists.

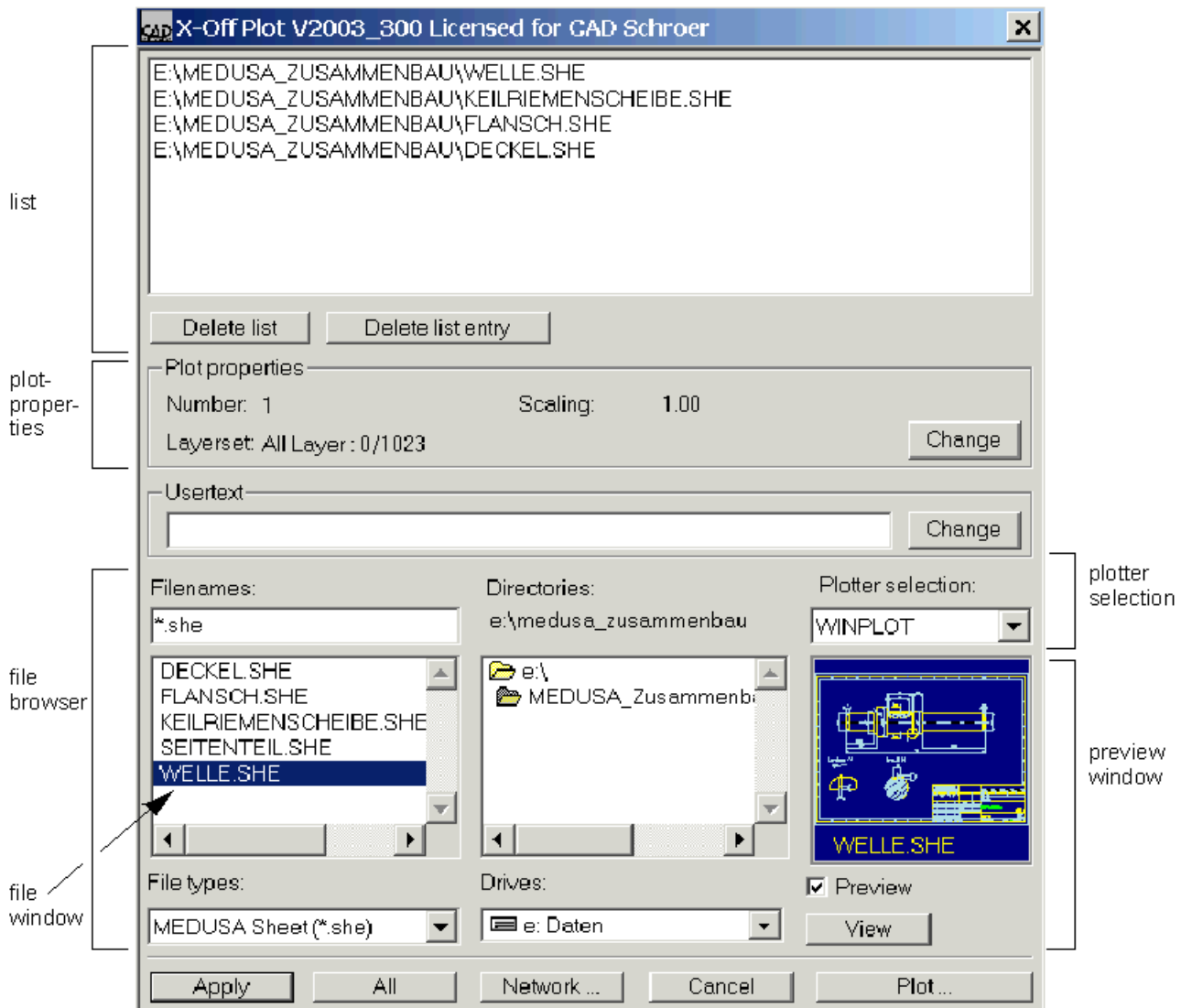
- [Overview](#) 12
- [List](#) 13
- [Plot Properties](#) 13
- [File Browser](#) 13
- [Preview Window](#) 13
- [Selecting a Plotter](#) 14

Overview

The following section gives you an overview of the configuration of the user interface.

X-Off Plot consists of the areas which are listed below:

- list area
- plot properties area
- file browser
- preview window
- plotter selection



In the following you get detailed information about using the areas which are listed above.

List

The list area enables you to display and to compile a list (button `delete list`) or to delete elements of the list (button `delete elements of the list`). If the extend of the list exceeds the display window, a scroll bar appears in the rightmost position of the window, which can be used to scroll through the list.

If configured, there is the `display list` button rightmost. The function of the button is explained in detail in the chapter „[Program Operating](#)“, „[Editing the List](#)“ on page 17.

Plot Properties

This area displays information from the `csgxoffplot.cfg` configuration file.

For editing this file please see chapter „[Configuration](#)“ on page 30.

Informations are displayed on the number of plots, on scaling and about the layer selection.

You can edit the settings by using the `Edit` button. This is explained in detail in chapter „[Program Operating](#)“, „[Plot Properties](#)“ on page 18.

File Browser

The file browser contains:

file name	In this input field you can specify the files by using wildcards.
file type	In this input field you can narrow the choice of the displayed files down by using file extensions.
directories	defines the file directory
file window	displays the files, which are selected by using the filter

Preview Window

The preview window consists of the actual window and the `Preview` option button. Switching the `Preview` option on activates the preview function. The MEDUSA file, which is selected in the file window, is now displayed in the preview window as a thumbnail.

Clicking on the `View` button opens a magnified preview window, where you can also zoom.

Selecting a Plotter

For selecting a plotter you can open a popup menu on which the available plotters are listed.

A plotter is selected by clicking with the *left mouse button* on the required entry. For details see „Program Operating”, „Choosing a Plotter” on page 18.

PROGRAM OPERATING

This chapter gives you some information how to work with X-Off Plot.

- Starting the Program 16
- Selecting a File 16
- Editing the List 17
- Preview 17
- Plot Properties 18
- Choosing a Plotter 18
- Plotting 19

Starting the Program

The program can be started with the command `<X-Off Plot install path>\bin\xoffplot.exe`, or by using the program symbol from the start menu.

Available request options are treated in chapter “[Command Line Arguments and License](#)” on [page 35](#).

Selecting a File

At first choose the desired path via the file browser. The default setting for the file type is `*.she`. The files according to this format are listed in the file window (see the figure in chapter “[The User Interface](#)”, “[Overview](#)” on [page 12](#)).

If you want to change the filter, you can either enter another file type in the `file type` entry field or open a list of file types via the arrow at the right and select one entry.

You can also make a choice of files by entering wildcards into the `filename` field. For example, if you type `a*.she`, any file, which begins with an `a`, will be displayed.

There are different possibilities to add the desired file to the plot list:

- *Double click* on the requested file in the file window.
- Select a file within the file window by *clicking the left mouse button* once and transfer the file to the plot list by pressing the `Apply` button.
- If you wish to take any files which are displayed in the file window over into the list, press the `All` button.

Please Note: To all three possibilities applies:
A new file is always inserted at the beginning of the list.

Editing the List

Now you are enabled to edit the list, which has been compiled before, by using the following buttons:

Delete list	If the list has been processed or it is not useable anymore, you can delete the existing list and generate a new one. Warning: After executing this action undo is not possible!
Delete list element	Using this command you can delete one or several files, which have been selected before with a mouse click, out of the list. Warning: After executing this action undo is not possible!
Preview	This button is only available, if an external viewer (for example Pro-Vis) is registered within the <i>csgxoffplot.cfg</i> configuration file. In this way you can comfortably get an optical impression of the complete list.

Preview

If you wish to view the sheets in the preview window, you have to activate the `Preview` function (by setting the checkmark in the option field). The sheet, which has been selected in the list window or in the file browser, will be displayed.

If you want to view the sheet, which is displayed in the preview window in detail, you can do this by using the `View` button.

The MEDUSA file will be displayed magnified in a new window. At this, several areas of the sheet can be checked up in detail by using the zoom function

Plot Properties

This area indicates:

- the number
- the scaling
- the setting of the layer (Layset)

It can be edit in the *csgxoffplot.cfg* configuration file. Values which are defined there are automatically displayed in this window, whereby always the first entry of the configuration file is inscribed in the `Layset` field.

If you made any mistake in the configuration file, you would be advised when starting X-Off Plot.

The `Plot properties` dialog is displayed via the `Edit` button. There you can modify the plot properties. You can insert a new scale factor in the `Edit` field. The number of copies can be set manually or via a `Spin` button.

The layer settings from the configuration file are displayed in the `Layer` popup menu. If you have named your layer combinations inside the file, these names will be displayed (see also chapter „[Configuration](#)“, „[Layset](#)“ on page 25).

You can also enter layers here, incorrect layers will be marked by a note and altered.

Please Note: Already when starting X-OFF-PLOT you are advised whether an error is with the layers in the *csgxoffplot.cfg* configuration file.

If you should take over these settings for all that, errors will occur during the plot process.

Choosing a Plotter

In the first place of the `Plotter` popup menu the entry `Auto Plot` is displayed. The choice displays the according plotter from the *cfg*-file in the upper plot-list window (see the figure „[The User Interface](#)“, „[Overview](#)“ on page 12).

On the basis of its sheet size any MEDUSA file will be assigned to the according plotter, when using the `Plot` button (for details see „[Configuration](#)“, „[Configuration of AutoPlot](#)“ on page 27). But you can also assign a plotter using the popup menu.

Please Note: If the choice is user-defined, the sheet may be possibly incorrect plotted on your plotter.

Plotting

If as well the list as the properties accord to your requests, transfer it to the plot queue by pressing the `Plot` button.

There will be a *plotdocu.loc* file created automatically, in which your plot jobs will be registered. This file contains the layer setting, the number of copies, the scaling and the according plot command (`XO_PLOTTER_CMD_<number>`.)

If the `AutoPlot` setting is activated, a plot command for any plotter will be created and saved separately in the *plotdocu.loc* file.

CONFIGURATION

This chapter gives you some information about making settings within the configuration files to customize X-Off Plot to the local system requirements.

- General Notes 22
- Plotter Selection 22
- Plotter Command 23
- Assignment of Sheet Size and Plotter 23
- Plot Program 24
- Plot Properties 24
- Viewer script 26
- AutoPlot 26
- Example of a Configuration File 28
- Usertext 29
- Localization 31

General Notes

In X-Off Plot any settings are made using configuration files. These provides plenty of possibilities for the user to customize X-Off Plot to the local system requirements.

The general configuration file for X-Off Plot is `<X-Off Plot install path>\cfg\csgxoffplot.cfg`.
Comment lines are marked by two hyphens “--” at the first two places of a line.
`<keyword> = <assignment>`

For example:

```
-- This is a comment  
XO_PLOTTER_NAME_1 = AutoPlot
```

In the following the several sections of the `csgxoffplot.cfg` are explained.

Plotter Selection

In this section the names of the plotter will be assigned. These names are not the physical names, which are used to start the plot process, but they appear in the `Plotter` menu field.

Syntax:

```
-- Plotter  
XO_PLOTTER_NAME_1 = AutoPlot
```

The number at the end of the keyword has to be handled as serial-number.
As the first plotter `AutoPlot` should be inserted, in order to be able to support this function.

Please Note: The `AutoPlot` entry is the only entry, which is assigned as a fixed name.

Only for **AutoPlot** no entry must take place in the section `Plot properties`.

Plotter Command

In this section the physical names (identification character) of the plotter will be assigned. With these names the plotter drivers will be identified and the descriptionfile are defined.

In order to all of this functions the following syntax must be kept with the assignment:

```
general:      <keyword>          = <assignment>
              --Plot command
```

```
Syntax:      XO_PLOTTER_CMD_3    = MEDPLOT_DIVER_IDENTIFICATION
```

```
example:     XO_PLOTTER_CMD_3    = MEDPLOT_WSHPG1_Oce2
```

At the first position the plotter driver identification has to be placed. The default identification of any MEDUSA plotter driver is

MEDPLOT_<type> (type = winplot, wshpgl2, wshpgl, csgraster etc.).

Separated by an underline “_” an unambiguous name has to follow the entry MEDPLOT.

This syntax configuration of the plotter command makes it possible to transfer a lot of information to the programm flow using only one entry. As previously mentioned, thereby the responsible plotter driver is specified. At the same time the complete identification accords to the name of the appropriated descriptionfile (without .DES extension).

Please Note: For the installation of plotter driver consider the note on [page 9](#).

Assignment of Sheet Size and Plotter

The specification of this section is required so that the AutoPlot function can execute the correct assignment of size and plotter. Beginning with the entry “_2” a sheet size has to be assigned to the plotter, defined by the X- and Y-value. It is not allowed to change the order of the values, otherwise wrong values would be assigned to the plotter.

Example:

```
-- Plot Properties
XO_PLOTTER_PROP_2 = 297;210
XO_PLOTTER_PROP_3 = 1189;841
```

Please Note: If the identification numbers are interchanged, a wrong dimension is assigned to the plotter and the Plot function probably gives an incorrect command to your plotter.

Plot Program

In this section the programs (scripts) for the several functions of the program are assigned.

The plot program (e.g. a script), which is started for plotting, is associated with the keyword `XO_PLOT_PRG`.

```
-- Plot Program  
XO_PLOT_PRG = csgplotter
```

The program, which is activated by using the `View` button and which enables you to preview the complete list, is associated with the keyword `XO_VIEW_PRG`. If there is no program assigned to this keyword, the `View` button will not appear in the current program.

```
-- Anzeige Programm  
XO_VIEW_PRG = csgviewer
```

Plot Properties

This area contains settings for the number of plots, the scaling and the layers. It defines the settings in the `Plot Properties` window.

Number of Copies

```
XO_CNT_COPY = 1  
or  
XO_CNT_COPY = 3
```

With this you define the number of copies.

Maximum Number of Copies

```
XO_MAX_COPY = 20
```

With this you can define the maximum number of copies. The popup menu in the `Edit` window of the plot properties is preallocated with this value.

Skalierungsfaktor

```
XO_PLOT_FAC = 1  
or  
XO_PLOT_FAC = 5
```

With it the scale factor for the plot of a sheet is preset.

Layset

Here the combination of the layers, which shall be plotted, is entered. The following entry can be inserted in your *cfg* file:

```
XO_LAYER_SET_000 = SET 0 | 345 999
                  (name of setting| layer combination)
XO_LAYER_SET_001 = 56/99 578/999
                  (layer combinations)
```

The following types of layerset syntax definitions are supported:

```
999           : Only layer 999 is plotted
1/1023        : All layers are plotted
1/*          : All layers are plotted
45/888        : All layers between 45 and 888 are plotted
66/*         : All layers from 66 upward are plotted

8 76 345      : Layers 8, 76 and 345 are plotted.
8/76 88 560/720 : Layers 8 to 76, layer 88 and layer 560 to 720 are
                plotted
6/* 66/77 99/123 8/* : Layer 6 upward will be plotted, the rest of the line is
789/999       : redundant
```

Incorrect Entries may be:

```
fff oder 7a   : Alphabetic characters where entered
-1 oder 1024  : The valid layer range from 1/1023 was left.
56/21         : This is an invalid range. The second number has to
                be higher than the first number.
6/*99        : By the use of the entry /* all layers from layer 6
                upward will be plotted, entry 99 is redundant.
77 88 23 77/* 99 66 : q. v., all layers from 77 upward will be plotted. Any
                other entry is redundant.
```

Viewer script

A viewer script could appear as follows (csgviewer):

```
@ echo off
echo File Viewer
type %2
```

The file list, which you created in X-Off Plot, is transferred to the scripts with two parameters. The first parameter contains the number of the plotter and the second one the name of a temp file, which contains the list entries.

AutoPlot

From version 1.3 it is possible, to set up an AutoPlot function in X-Off Plot.

What is AutoPlot?

If the AutoPlot function is activated, X-Off Plot identifies the sheet sizes of the files which shall be plotted and assigns it automatically to the corresponding configured plotter. (AutoPlot is also displayed in the plotter selection window)

Example:

AutoPlot plots all A4 formats on a laser plotter, all A3 formats on an inkjet printer and A0 formats on an electrostatic printer without having made a choice before.

Configuration of AutoPlot

As described before you have to make settings for the AutoPlot function in the configuration file
<X-Off Plot install path>\cfg\csgxoffplot.cfg.

Syntax:

```
XO_PLOTTER_NAME_1 = AutoPlot
XO_PLOTTER_CMD_1 = AutoPlot
XO_PLOTTER_PROP_2 = <x>;<y>
.
.
XO_PLOTTER_PROP_x = <x>;<y>
```

Example:

```
-- Plotter
XO_PLOTTER_NAME_1 = AutoPlot
XO_PLOTTER_NAME_2 = A0 Plotter
XO_PLOTTER_NAME_3 = A3 Laser
XO_PLOTTER_NAME_4 = A4 Laser
-- Plotter Command
XO_PLOTTER_CMD_1 = AutoPlot
XO_PLOTTER_CMD_2 = MEDPLOT_WSHPG2_DESIGNJET
XO_PLOTTER_CMD_3 = MEDPLOT_WSHPG2_HP5000
XO_PLOTTER_CMD_4 = MEDPLOT_WSHPG2_HP4040
-- Abmessungen
XO_PLOTTER_PROP_2 =841;1189
XO_PLOTTER_PROP_3 =420;594
XO_PLOTTER_PROP_4 =210;297
```

Explanation:

This example shows how the AutoPlot function would distribute the plots according to the specified dimensions.

For Example an A0 sheet would be printed on the DesignJet as the A0 dimensions are assigned to the plotter with the identification number 2.

If you wish to plot an oversized sheet, a dialog will be called up, where you can assign manually a plotter.

Please Note: If one of the entries should be invalid, AutoPlot will not be activated. Furthermore there is the risk of causing an error because of an incorrect configuration.

Example of a Configuration File

An example of a configuration file is shown in the following:

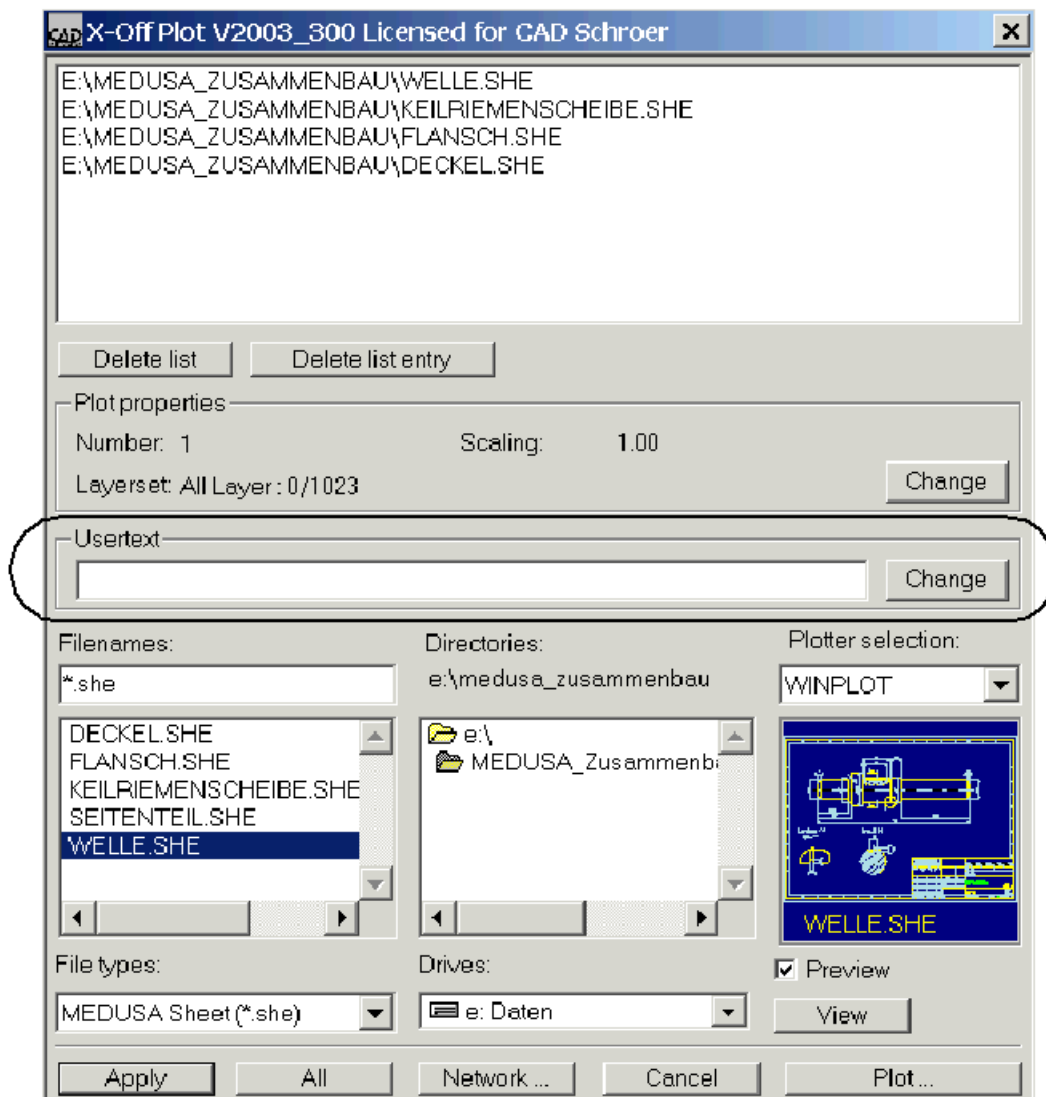
```
- general configuration for X-Off Plot
-- Plotter
XO_PLOTTER_NAME_1 = AutoPlot
XO_PLOTTER_NAME_2 = DesignJet650c
XO_PLOTTER_NAME_3 = IBM4019
XO_PLOTTER_NAME_4 = MED_A0
-- Plotter command
XO_PLOTTER_CMD_1 = AutoPlot
XO_PLOTTER_CMD_2 = DesignJet650c
XO_PLOTTER_CMD_3 = IBM4019
XO_PLOTTER_CMD_4 = MED_A0
--Plotproperties
XO_PLOTTER_PROP_2 = 297;210
XO_PLOTTER_PROP_3 = 297;210
XO_PLOTTER_PROP_4 = 841;1189
-- Plot program
XO_PLOT_PRG = csgplotter
-- View Program
XO_VIEW_PRG = csgviewer
```

Usertext

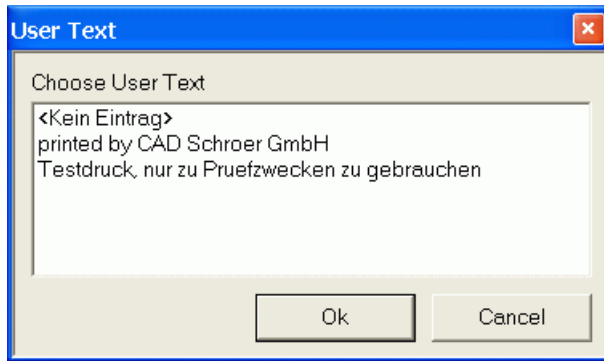
Starting from Version V1.4 the `Usertext` function is available. With it you can print a text with the plot. Thereby the original sheet will not be modified. (see the figure below)

Applying the Usertext Function

For using this function, a file named `usertext.cfg` has to exist in the directory `<X-Off Plot install path>\cfg`. If the file is available, the input mask extends by a field.



Click on `Edit` by using the *left mouse button* to open the following window. In this dialog you select the text, which should be plotted.



Click on one entry to select the accordant text and confirm it by using the OK button.

<Kein Eintrag> means, that no text will be printed. (German „Kein Eintrag“ = no entry)

Configuration

In order to insert texts into the choice mask you have to edit the file *<X-Off Plot install path>\cfg\usertext.cfg* with an editor.

If the file is not available, create one.

Here an example of a configuration:

```
NOTEXT = <no entry>
TEXT    = printed by CAD Schroer GmbH
TEXT    = preliminary, use only for test purpose
```

There are two **keywords**:

- NOTEXT =
No text will be plotted, the entry behind the “=” can be arbitrary.
- TEXT =
A text is printed with the plotter. The entry behind the “=” will be plotted.
Please type in the text, which should be printed with the sheet.
It is limited on 256 characters.

Localization

X-Off Plot is available in German and English language.

The setting for the required language takes place in the *csgxoffplt.cfg* file as follows:

- German:
LANGUAGE = ger
- English:
LANGUAGE = gb

THE PLOT PROGRAM

This chapter gives you information regarding to the functionality of the plot program after having made all settings and having initiated the plot process initiated by using the Plot button.

Operation of the Plot-Program (Scripts)

If all settings for plotting were made, e.g. sheets selected and plotter adjusted, then the Plot button is enabled.

Using this button the plot program is called up with a number of **parameters** and some specifications are set by **environment variables**.

Parameter Values

The following parameters will be passed to the plot program:

1. Parameter: Plotter command

This is the value, which is adjusted in the configuration file for this plotter.
(see „[Configuration](#)“, „[Plotter Command](#)“ on page 23).

2. Parameter: File List

The file list which has been created in X-Off Plot is stored in a temporary file. This file name is transferred with the second parameter.

The file is a standard ASCII file, in which the complete path to a MEDUSA sheet is inscribed in any line.

This file may not be deleted, as long as the plotter driver is active.

Environment Variable

Some settings put on in X-Off Plot are stored via the environment variables.

- *CSG_LAYERSET*
The settings to the layers, which shall be printed with the plot.
(see „[Configuration](#)“, „[Layset](#)“ on page 25)
- *CSG_PLOTCOUNT*
The number of the plots
(see „[Configuration](#)“, „[Number of Copies](#)“ on page 24).
CSG_PLOTFAC
The plot factor, all sheets are charged with this factor
(see „[Configuration](#)“, „[Skalierungsfaktor](#)“ on page 24).
- *CSG_USERTEXT*
The usertext is passed with this variable.
(see „[Configuration](#)“, „[Configuration](#)“ on page 30).

COMMAND LINE ARGUMENTS AND LICENSE

Command Line Arguments

X-Off Plot can be used with the following command line arguments:

- `p [<directory>]` The start directory, adjusted for browsing, can be replaced with `<directory>`.
- `d [<"Filter;Ext">]` The filter, adjusted by default, can be replaced with `<"Filter;Ext">`.

Example:

```
...\XOffplot.exe v p E:\Archiv d "All Files (*.*)|*.*||;*.*)"
```

Note: Please, insert filter always between inverted commas.

License

The keyfile for the X-Off Plot product will be not delivered with the CD. With the order you apply for a keyfile request with the licenser. In return he will send you the keyfile.

For earlier versions of X-Off Plot an own license file was supplied. Since Version V2003-300 the keyfile is delivered with the MEDUSA license. The appropriate feature line for X-Off Plot is registered inside the license file `csglmd.lic: xoffplot_view`

The path to the MEDUSA-license has to be set in the `LOGIN.BAT` file of the `USER_PROJECT`.

If you want to use another license than those, which is set in the `USER_PROJECT`, you can set the system variable `<MEDUSA_LICENSE_PATH>` with the path to the desired license. If the system variable is set, the accordant path to the license will be used when starting the program.

ERROR MESSAGES

Error

failure registration for product

Inside the Registry the following entry must exist:

[HKEY_LOCAL_MACHINE\SOFTWARE\CADSchroer\X-Off Plot\2003.300]

The message above appears, if the entry is not correct, e.g.:

[HKEY_LOCAL_MACHINE\SOFTWARE\CADSchroer\X-Off Plot\2003.3].

FATAL ERROR

Product contains no version

Inside the Registry the entry for the version `CurrentVersion` does not match the product version.

FATAL ERROR

Product contains no CSGE DLL version

Inside the Registry the entry `CSGE_DLL Version` does not exist.

Fatal Error

Product contains no CSGM DLL version

Inside the Registry the entry `CSGM_DLL Version` does not exist.

MedusaUserPrj path not found in registry

Inside the Registry the path `MedusaUserPrj` is missing.

MedusaUserPrj path: ... not found

Inside the Registry the path `MedusaUserPrj` is missing.

Fatal Error

XOffPlot Color Configuration does not exist ...

The file `color.cfg` is missing in the product.

Fatal Error

X-OffPlot Config file was not found

The *csgxoffplot.cfg* file in the directory *<x-off_plot install path>/conf* does not exist. Such a file is described in detail in chapter „[Configuration](#)“, „[Example of a Configuration File](#)“ on page 28.

Error

Registry product path: ... does not exist

Inside the Registry the path `ProductPath` is missing.

undefined error in license file

This message is for all cases that the X-Off Plot license cannot be found. Either the entry inside the keyfile does not exist or the path to the keyfile is set wrong. For details see chapter “[License](#)” on page 35.

INDEX

A B C D E F G H I J K L M N O P Q R S T U V W X Y Z

A

assignment of size and plotter 23
AutoPlot 22, 26

C

command line arguments 35
Configuration AutoPlot 27
configuration file
 general 22
Copyright 3
CSG_LAYERSET 34
CSG_PLOTCOUNT 34
CSG_PLOTFAC 34
CSG_USERTEXT 34
csgviewer 26
csgxoffplot.cfg 13, 22

D

Delete list element 17
Delete list, list delete 17
Display files 17

E

edit list 17
Environment Variable 34
Error messages 37
example of a configuration file 28

G

general configuration file 22

I

Installation 9

L

language 31
Layset 25
License 35
list
 delete element of 17

edit 17
list area 13
Localisation 31

N

NOTEXT 30
number of copies 24

P

Parameter Values 33
Plot Program 24, 33
Plot Properties 13, 24
plotdocu.loc 19
Plotter Command 23
Preview 13
preview window 13

S

scalefactor 24
selecting a plotter 14
setting
 number of copies 24
Start 16

T

TEXT 30
Trademarks 3

U

user interface 12
Userstext 29
userstext.cfg 29, 30

V

View 13
Viewerscript 26

X

XO_CNT_COPY 24
XO_LAYER_SET_000 25



A B C D E F G H I J K L M N O P Q R S T U V W X Y Z

XO_MAX_COPY 24
XO_PLOT_FAC 24

XO_PLOT_PRG 24
XO_VIEW_PRG 24